

# LACTOSE INTOLERANCE

quick test

BIOHIT HealthCare

Innovating for Health



## Product specifications

- Sample: duodenal biopsy specimen
- Test principle: detection of lactase activity
- Test components: test plate, reagent bottles (3 pcs), instruction for use
- Storage: +2-8°C



## Ordering details:

Cat. No.	Item
602010	25 tests/box
602012	10 tests/box
602018	Lactase control reagent

Exclusively available in  
India through

**GASTROLAB™**

For more information write to  
[info@GASTROLAB.COM](mailto:info@GASTROLAB.COM) | +91 88893 99914

I 202, SPECIALITY BUSINESS CENTRE,  
BALEWADI, PUNE 411045



In the USA for research use only.

## References:

1. Jolanda F, Parodi F et al. Poster presentation at DDW 2009; S2067.
2. Kuokkanen M, Myllyniemi M et al. Endoscopy 2006; 38: 708-712.
3. Ojetti V, La Mura R et al. Dig Dis Sci. 2008; 53(6): 1589-92

490061EN 06/2014



20 min  
FROM BIOPSY

# LACTOSE INTOLERANCE

quick test

## Confirmed results during gastroscopy

The Lactose Intolerance quick test detects all types of lactase deficiency from biopsy specimens. This gives added value to gastroscopies with minimum effort. The test is based on the normal lactase enzyme reaction and is therefore able to detect lactase deficiency as well as indicate the functionality of the enzyme. The Lactose intolerance quick test is not only a sensitive diagnostic tool, but it has also been found to be more accurate than lactose breath test in predicting clinical response to lactose-free diet<sup>1</sup>.

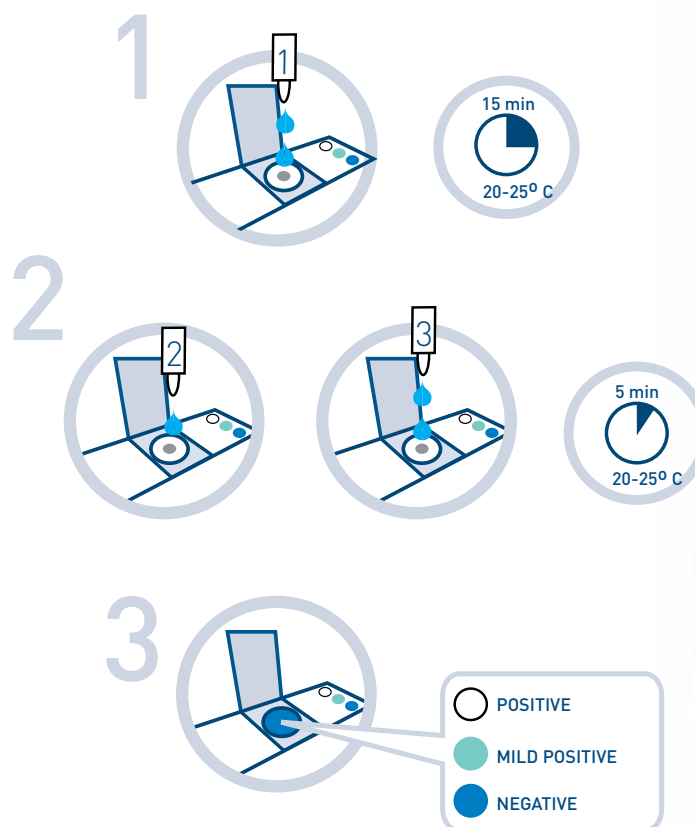
- Results in 20 minutes
- Simple color chart interpretation
- All reagents ready-to-use
- Sensitivity 95%, specificity 100%<sup>2</sup>
- Superior sensitivity compared to lactose breath test<sup>3</sup>

## Easy testing from a duodenal biopsy specimen

The test procedure of the Lactose Intolerance quick test is fast and simple. The biopsy specimen is placed in the test plate and reagents are added to the sample. Results are available in just 20 minutes enabling testing and reporting during one visit.

## Simple test procedure

1. Place biopsy into the well. Add two drops of **reagent 1**. Shake the plate.
2. Add one drop of **reagent 2** and two drops of **reagent 3**. Shake the plate.
3. Read the result against the color chart.



Results in  
20 minutes

